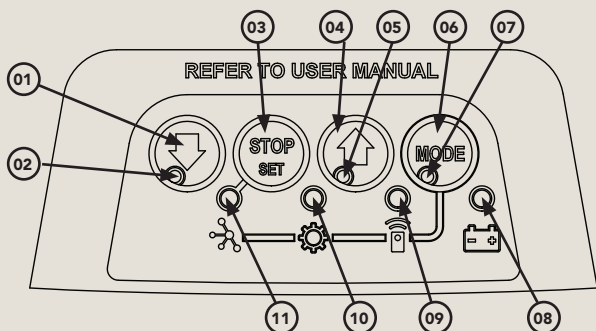


Genius HD, Genius & Precision

Sectional Door Openers

Quick Operation Guide

1.0 USER OPERATING CONTROLS



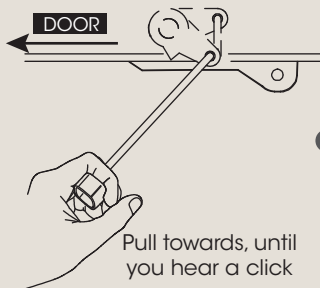
Button	Function
01	Close
02	Close indicator
03	Stop
04	Open
05	Open indicator
06	Mode
07	Status indicator
08	Battery status indicator
09	Remote status indicator
10	Adjustment indicator
11	Network indicator

2.0 MANUAL DOOR OPERATION

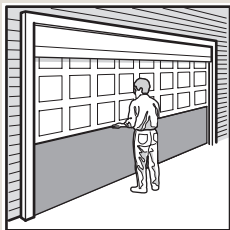
TO DISENGAGE THE OPENER



It is recommended to disengage the door with the door in the closed position.



Pull towards, until you hear a click

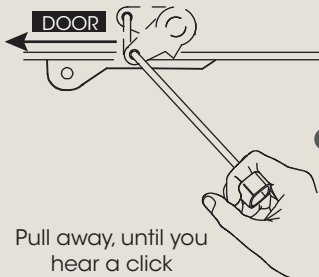


Manually operate door



CAUTION: When the opener is manually disengaged, the door is no longer locked. To lock the door manually, re-engage the opener after the door is closed.

TO ENGAGE THE OPENER



Pull away, until you hear a click



Press to test



CAUTION: Do not use the string handle as a mechanism to open the door. Failure to comply may cause serious injury.

3.0 CODING A REMOTE CONTROL

CODING REMOTE FROM THE OPENER



tip

The opener can only be operated from remote controllers that have been programmed into its memory. Up to 64 remotes can be programmed.

STEP ONE



Switch power on and remove controls cover

STEP TWO



Press repeatedly



till remote LED lit

STEP THREE



HOLD

Opener flashes & beeps



HOLD for 3 sec

RELEASE

HOLD for 3 sec

Release both buttons

STEP FOUR



Then refit controls cover

STEP FIVE



Press to test

REMOTELY CODING A REMOTE CONTROL



tip

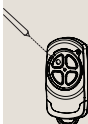
Remotely coding works when you have a pre-coded remote control and are in range of the opener.

STEP ONE



Take a pre-coded remote and press the button to duplicate

STEP TWO



Use a pen,

HOLD for 2 sec

the middle button through the coding hole

STEP THREE

Opener flashes & beeps



Take new remote

HOLD for 3 sec

RELEASE

HOLD for 3 sec

RELEASE

STEP FOUR

Opener stops flashing & beeping



Press to test

4.0 CHANGING A BATTERY



tip

Battery Type: 1 x CR2032.

STEP ONE



HOLD

Check Light Status Table



Light Status

Battery

Solid

OK

Flashing

Replace

No light

Replace

STEP TWO



Use screwdriver to remove screws and open

STEP THREE



Use non-metallic object to push out.



WARNING!: The battery is hazardous and must be kept out of reach of children. The battery can cause severe or fatal injuries within 2 hours or less if swallowed or placed inside any part of the body. If you suspect the battery has been swallowed or placed inside any part of the body, **SEEK IMMEDIATE** medical attention.

5.0 SMART PHONE CONTROL

(Optional for Precision)

The Smart Phone Control works via your home's WiFi network. Initial set up involves linking your phone app and smart opener to your home network.



WARNING!: This device allows for operation of the door when not in line-of-sight of the door and opener. The door may operate unexpectedly, therefore do not allow anything to stay in or near the path of the door.

BEFORE YOU START



Download the Garador App to your smartphone



Ensure limits are set prior to connecting to wifi



The home WiFi router is within range of opener

STEP ONE



Remove controls cover & Press repeatedly

fill network LED is lit

STEP TWO



HOLD for 5 sec

LED will turn PURPLE (HOTSPOT ON)

STEP THREE



Go to phone settings, then WiFi and select (GAR000000)

Open APP and click START

STEP FOUR



Set up new Smart Hub in app

Smart Hub connect appears, ensure WiFi network = (GAR000000)

STEP FIVE



Network LED and light will flash.

Press


Follow instructions in the app
Network LED will turn Blue then return controls cover

6.0 TROUBLESHOOTING

Main Light = Service / Warning Indicator:

Requirements for a service and user warnings are indicated after operation by the main light repeatable flashing OFF a number of times followed by a pause.

The below table identifies the issues and remedies

	Issue	Remedy
1	Normal operation (door is fully open)	
2	PE is preventing door from moving	Clear away any obstructions. Test Door. If unable to move the door and suspect beam is faulty, enter Safety Beam Emergency Close by pressing and holding a pre-coded transmitter button until the door closes.
3	Wireless Auto-Lock battery is low	Change Auto-lock battery
4	Wireless PE battery is low	Change PE Battery
5	Wireless Auto-Lock is not unlocked and preventing door moving	Check Auto-Lock, test by pressing emergency release button on the lock and the test door operation.
6	Maintenance is due after pre-set number of cycles.	Contact dealer to arrange service.
7	Standby battery is faulty	Contact 0800 427 236 within New Zealand for assistance.
8	Door was obstructed	Clear away any obstructions and test door opens/closes correctly. (if the door is damaged, contact a door professional)
9	Motor overloaded or stalled	Contact dealer to arrange a door service.
10	Unit running on battery power (Optional)	Main light will flash (3) three times at the start of the cycle to indicate the opener is running from battery backup and 10 flashes at the end of cycle. Check power supply.

7.0 CARING FOR YOUR OPENER

Preventative servicing of your garage door and opener, is important. Your garage door is made up of numerous moving parts designed to lift and lower your door safely and efficiently.

Ongoing preventative servicing ensures that your door continues to function within factory specifications, greatly reduces the risk of failure and repair bills down the track and ensure you maintain your Warranty.

Refer to your Owners Opener Handbook for your service schedule available [HERE](#).



Refer to the installation manual for monthly testing procedures in Section 13 to ensure garage door is fit for use available [HERE](#).

Online warranty details are available [HERE](#).

8.0 NEED A SERVICE CALL?

If the opener needs a service please call the dealer who installed the garage door opener (their contact details are usually on a sticker on the back of your garage door).

For product assistance, general enquiry or more information, please visit:

garador.co.nz
or call **0800 427 236**.