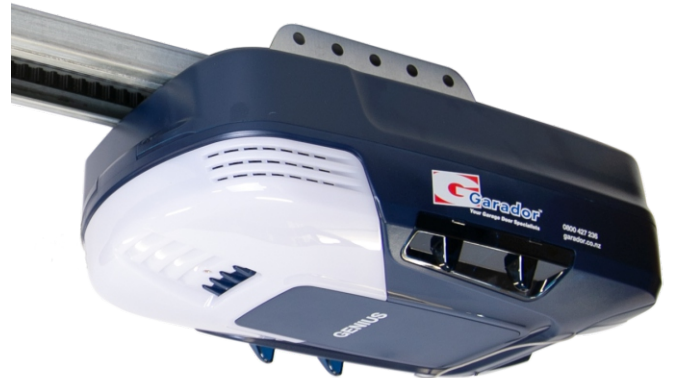


# Genius Opener Smart Phone Control App

## Quick Setup Guide



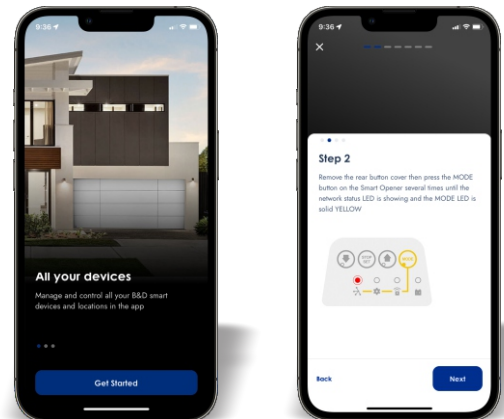
### Garador Smart Garage Access

The Genius Opener's smart phone control feature works via your home's WiFi network. Initial set up involves linking your phone app and Genius opener to your home network so that you can reliably operate your door from the app.

This user guide will show you the steps required to get you started.

### Before You Start:

1. Have your Genius Opener and garage door operating via remote control.
2. Ensure your Genius Opener is within range of your home WiFi router.
3. Know your home WiFi password.
4. Download the Garador App.  
(Scan one of the QR codes below.)
5. Click on "Get Started" & follow the steps.



### Download the App:



Scan QR code to  
download the  
Garador App  
for iOS devices.

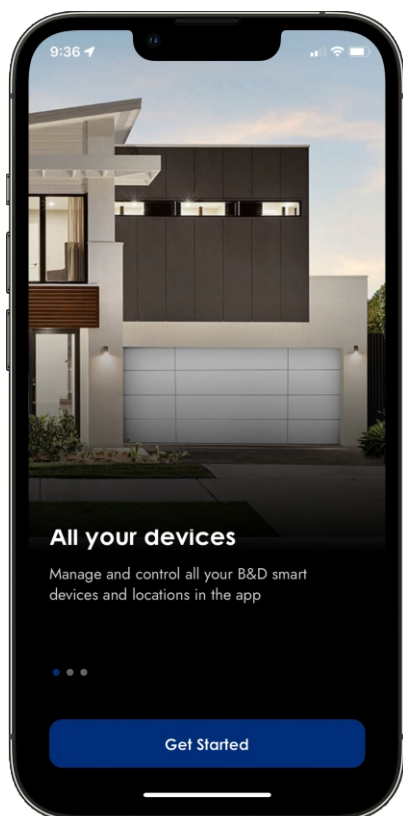
[garador.co.nz/ios/](https://garador.co.nz/ios/)



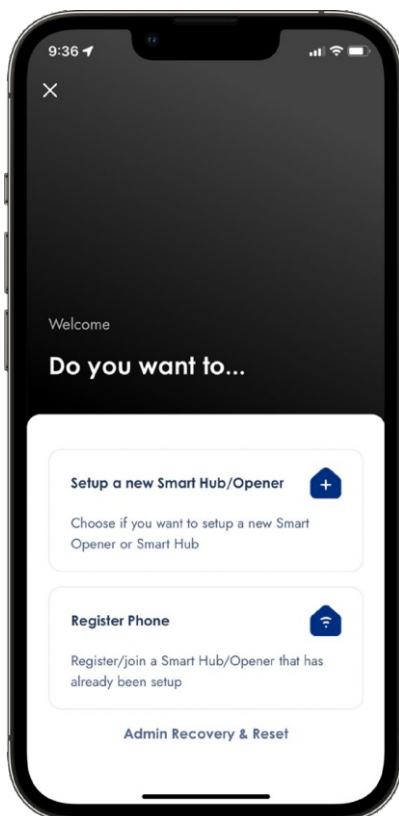
Scan QR code to  
download the  
Garador App  
for android devices.

[garador.co.nz/android/](https://garador.co.nz/android/)

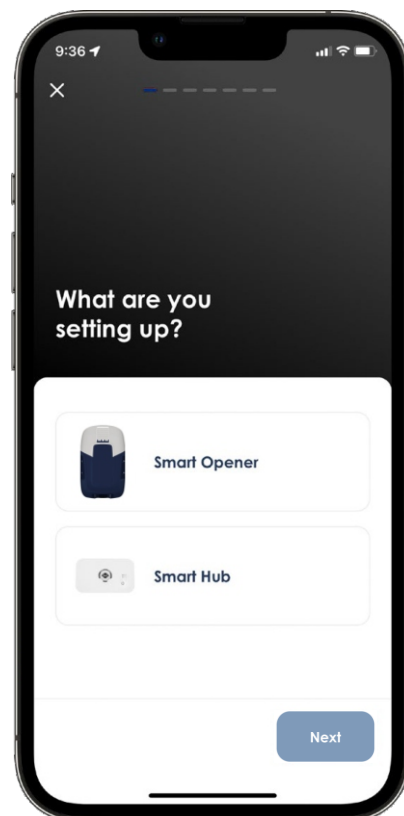




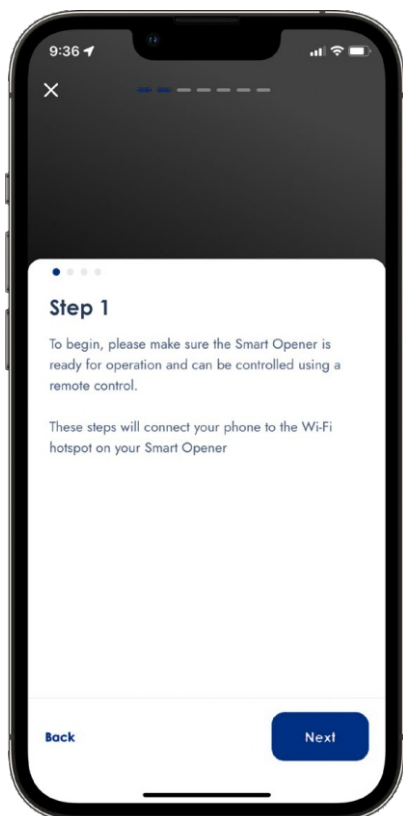
Click on "Get Started"



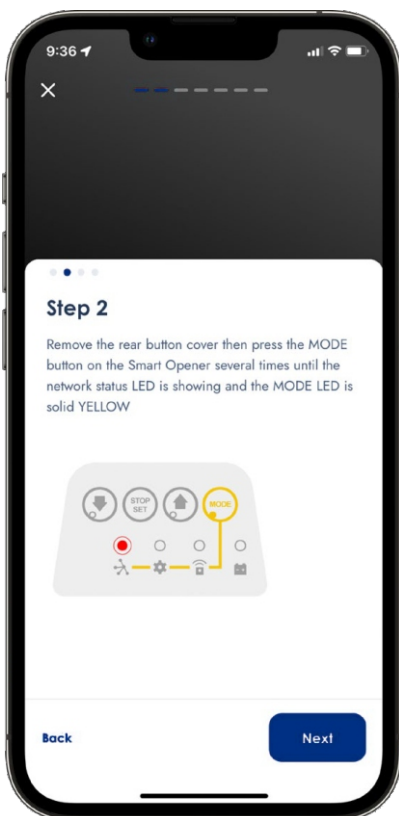
Click on "Setup a new Smart Hub/Opener"



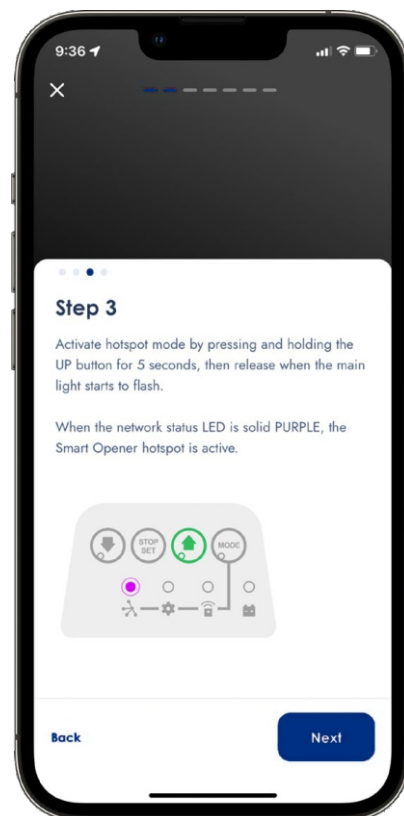
Click on "Smart Opener" then "Next"



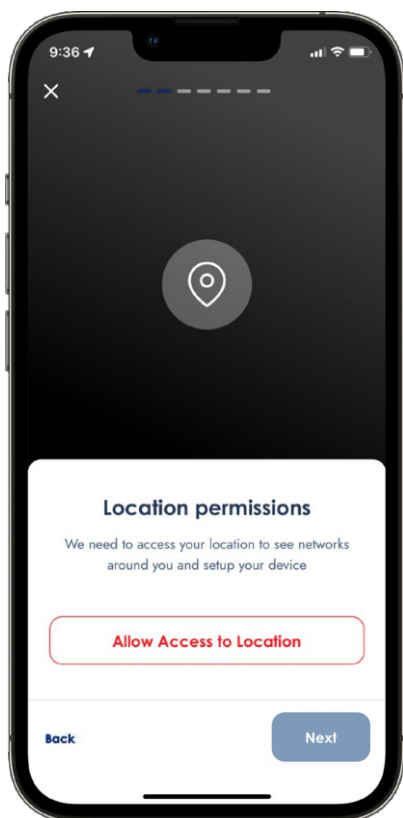
Ensure Smart Opener is ready for operation and can be operated by remote. Click on "Next"



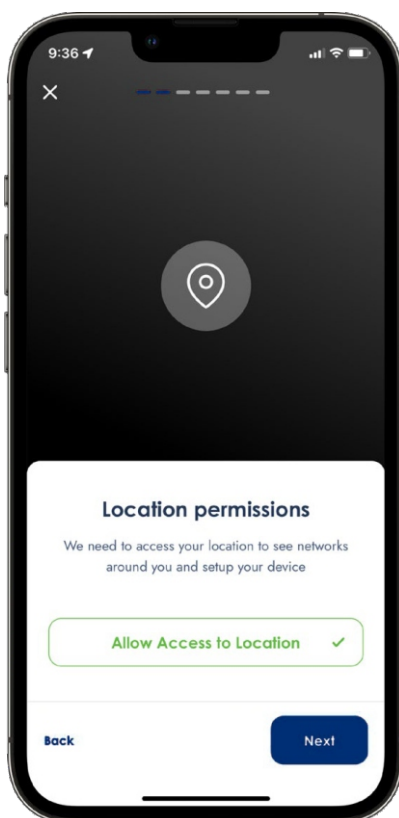
Remove the rear button cover then press "Mode" button on the Smart Opener several times until the "Mode" button turns YELLOW



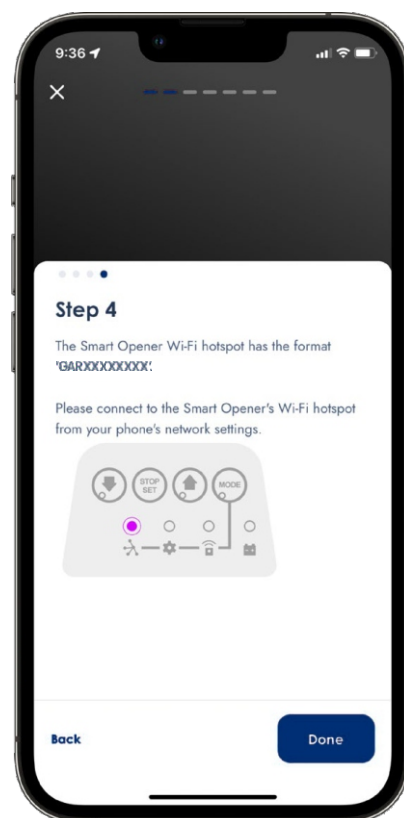
Activate hotspot mode by pressing and holding the UP button up for 5 seconds then release when the main light starts to flash. Hotspot is active when network status light turns solid PURPLE



Click on "Allow Access to Location"



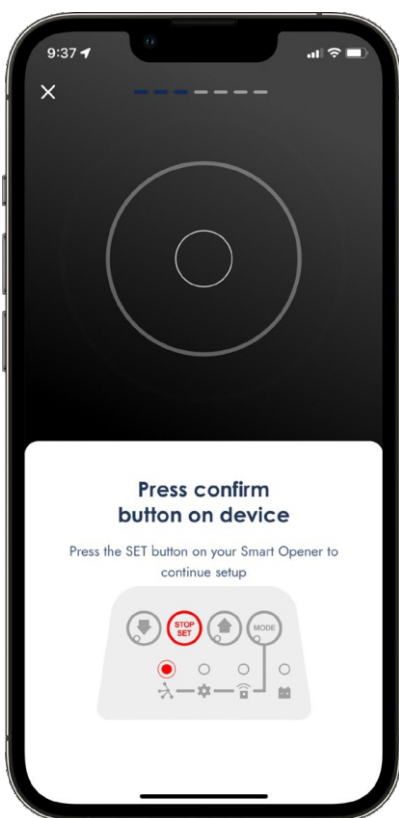
Click on "Next"



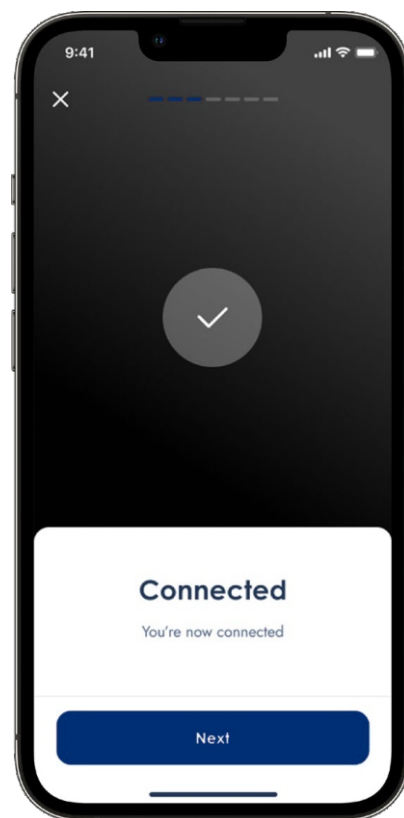
Note – this step will only appear if it cannot find the Hub automatically



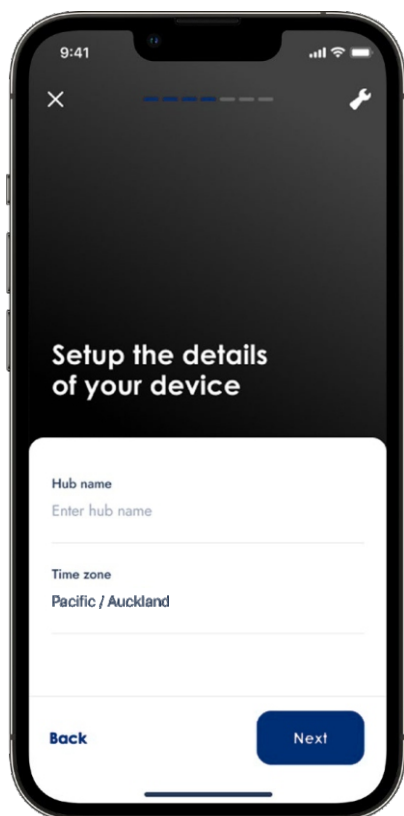
Connecting to WiFi



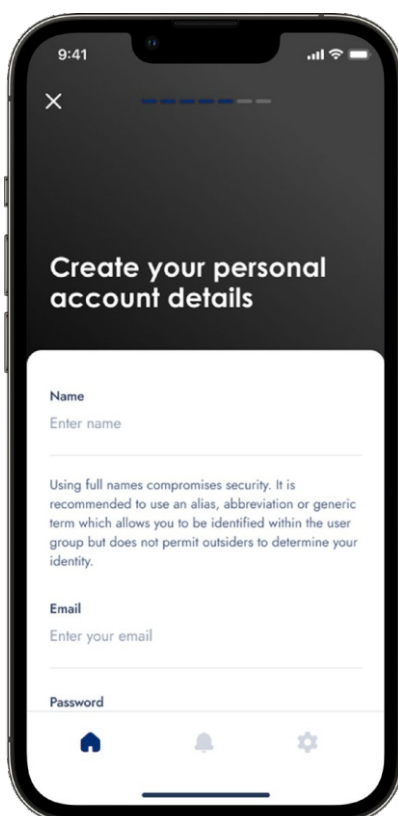
Press confirm on your device and the set button on your Smart Opener



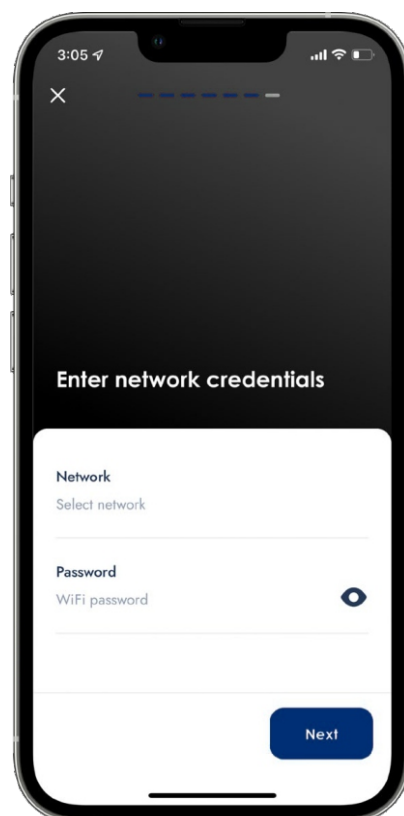
You are now connected



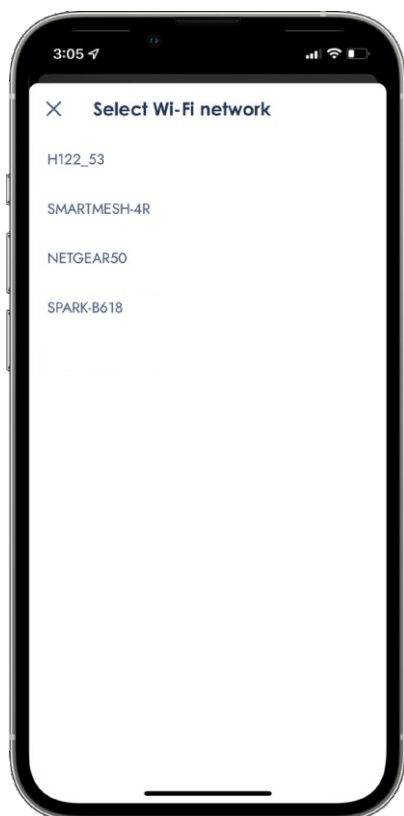
Setup the details on your device  
Click on "Next"



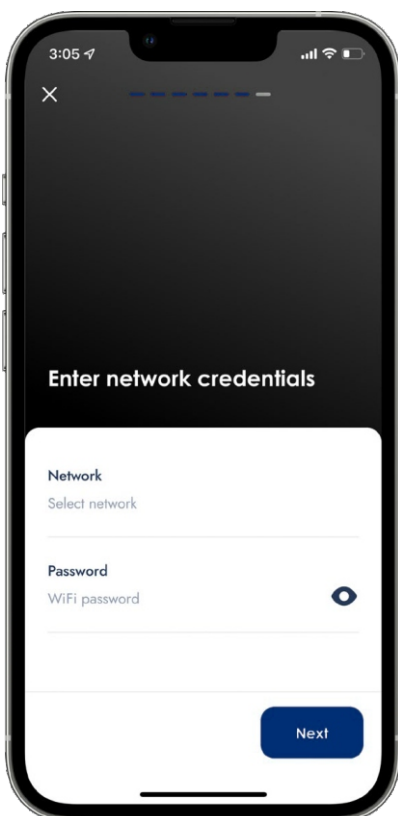
Complete your details



Enter your WiFi network details



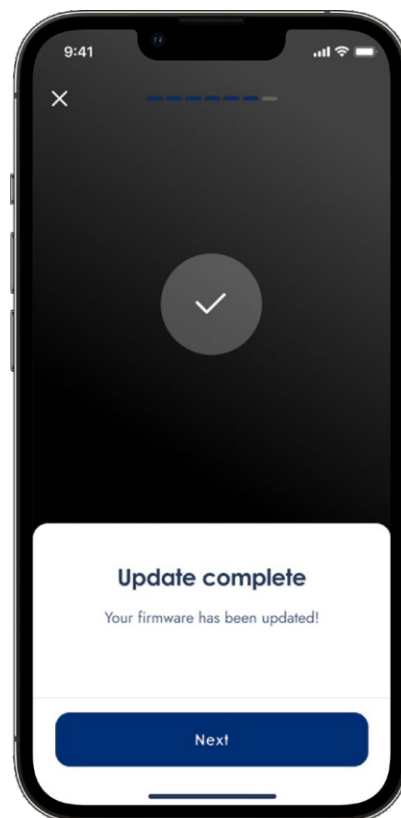
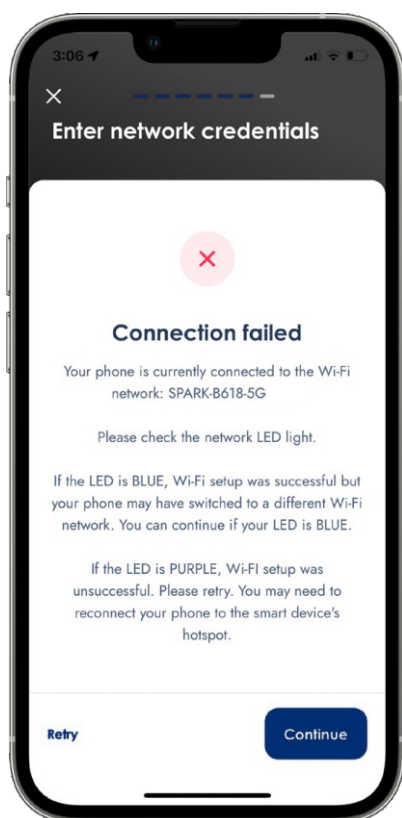
Select your WiFi network – this needs to be a 2.4Ghz network



Enter your WiFi password  
and press 'Next'



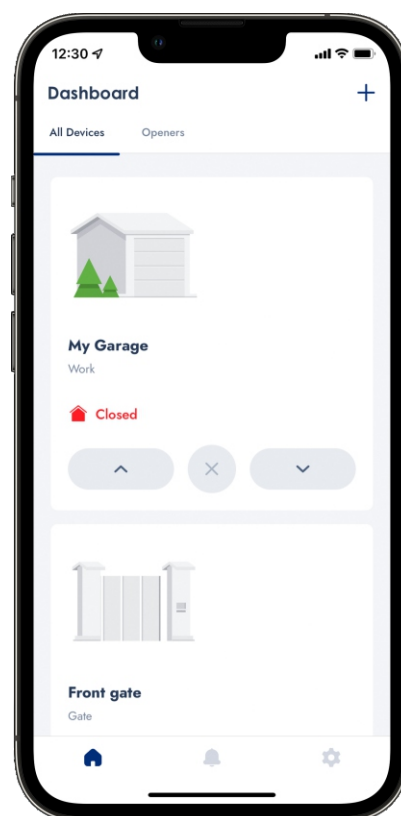
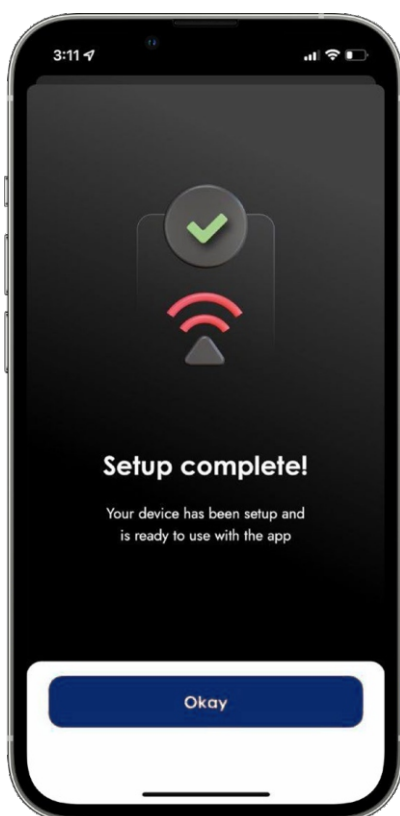
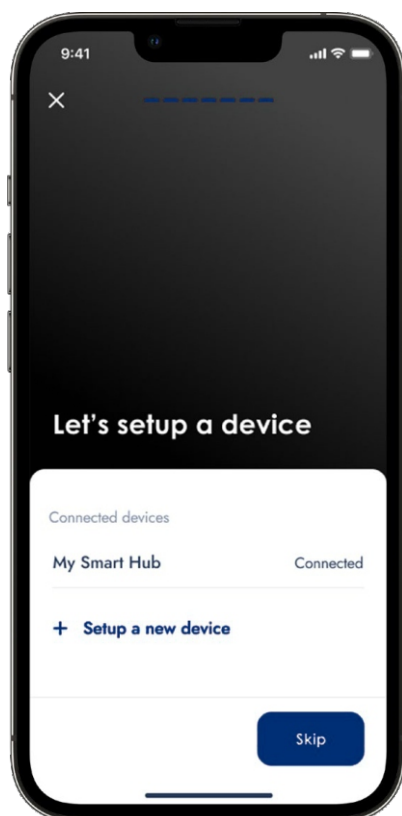
The app will now connect to your WiFi  
– this can take several minutes



Note: If your home has multiple WiFi networks and your phone reconnects to a different network to your hub you may see the above message

Searching for updates to the WiFi firmware, please wait

Firmware now updated, click on "Next"



Setup new device or "Skip" if you have no additional garages or devices to set up

Set up complete - your Smart Opener is now ready to use.

Your App is now set up and you will be able to view your garage or gate on the dashboard